



DYNAMO
JUGENDKULTURHAUS

**VENUE
INFORMATION**

WERK

21

Jugendkulturhaus Dynamo
Wasserwerkstrasse 21
CH-8006 Zürich
info@dynamo.ch
+41 44 415 76 60
www.dynamo.ch

WELCOME TO DYNAMO!

What is Dynamo?

The Dynamo Youth Culture Center is a non-profit institution located directly on the Limmat River, it's part of the Social Services of the City of Zurich. Our users and visitors, along with their cultural interests, are at the center and shape everything we offer. We provide youth and young adults with spaces where they can develop their own initiative, assume responsibility, and unleash their creativity. They implement their activities, projects, and events according to their own ideas and needs and receive professional and practical support as needed.

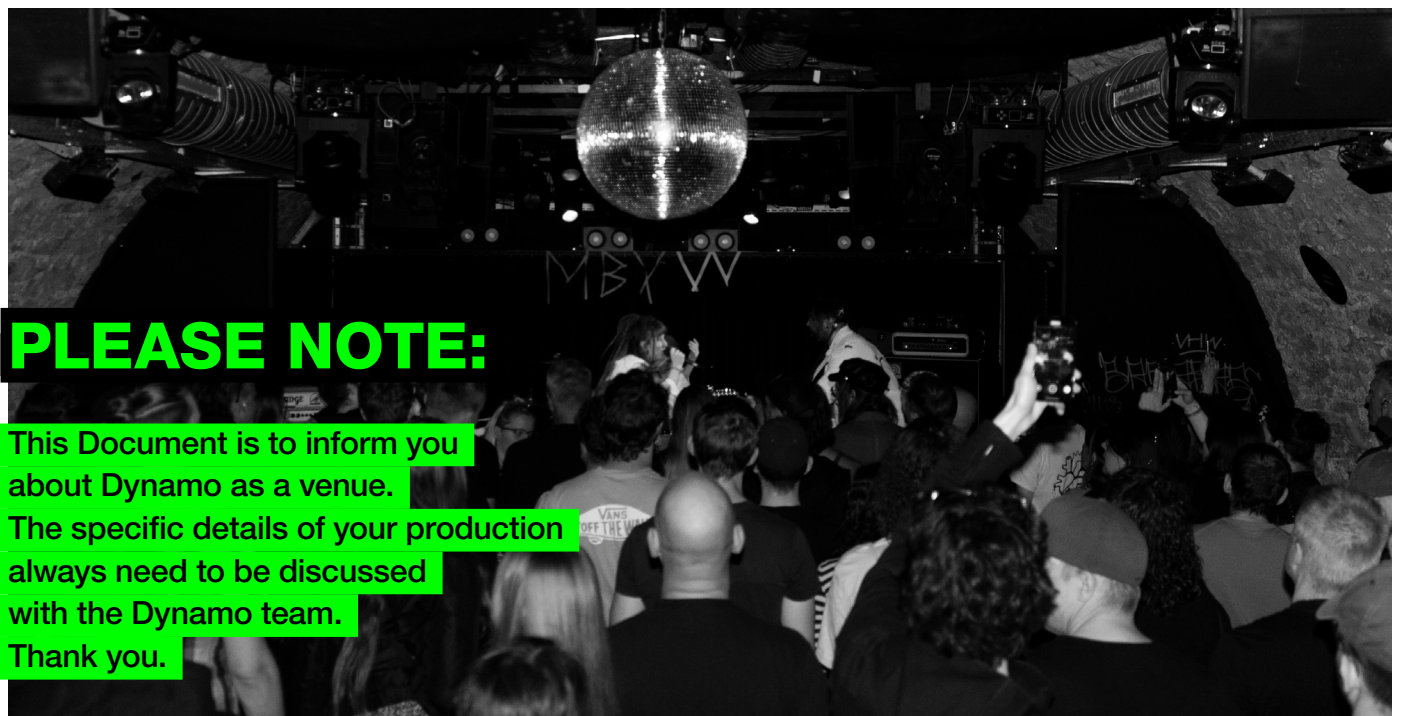
At the same time, we are also a meeting place for the entire population, building bridges between generations.

In this way, we make youth culture accessible to a broader section of the population and foster mutual understanding and acceptance.

CAPACITY

| | |
|-----------------|-----------------------|
| Standing | 200 |
| Sitting | with FOH 36 |
| | without FOH 42 |

Bookable for Concerts or Parties, only public occasions



PLEASE NOTE:

This Document is to inform you about Dynamo as a venue. The specific details of your production always need to be discussed with the Dynamo team. Thank you.

Index

| | | |
|---|--------------------------------|----|
| - | Directions | 4 |
| - | Load in / load out | 5 |
| - | Parking | 6 |
| - | Floor / Stage | 7 |
| - | Audio | 9 |
| - | Light | 11 |
| - | Video / Data Projection | 11 |
| - | Backstage / Artist Care | 12 |
| - | Further informations | 13 |
| - | Pictures | 14 |

DIRECTIONS

To get to the backstage entrance and the loading zone, please use this address:

Wasserwerkstrasse 21
8006 Zürich
Switzerland



MAPS

PLEASE CONSIDER

there is a concrete step barrier between the lanes at the Wasserwerkstrasse, thus you can't turn around on the spot.



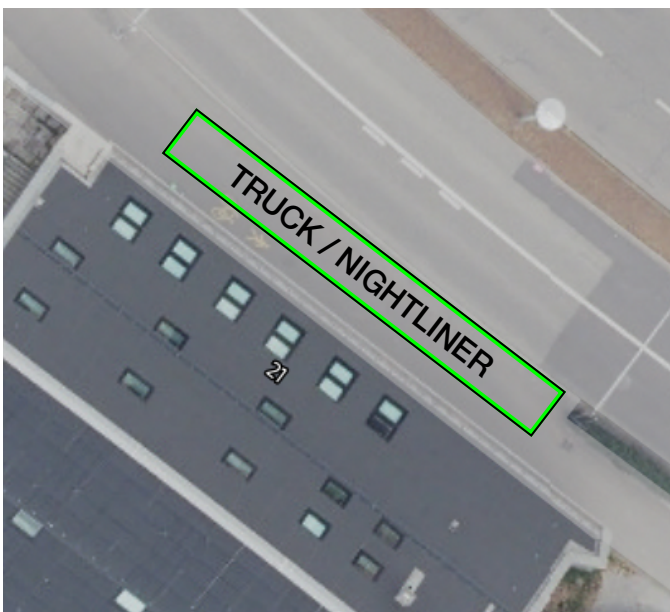
LOAD IN /

LOAD OUT

Loading is only possible at the agreed time according to the schedule, while the exact unloading time will be determined on the day of the event.

BUS/TRUCK STOP AND LOADING

The vehicle (bus/truck) must drive fully onto the sidewalk at Wasserwerkstrasse 21. Traffic on the left must not be obstructed. Please leave enough space on the right for pedestrians and cyclists. Only one bus or truck is allowed at a time.



PLEASE KEEP IN MIND,

that the loading zone is NOT a parking spot and the load should be completed as quickly as possible.

From loading zone its a 30m flat push to the elevator, then a 30m flat push to the stage.

**Door Dimensions:
2,29m x 1,69m (H x W)**

**Elevator Dimensions:
2.2m x 1.3m x 1.7m
(H x W x D)
max. weight: 1600kg**



(1) LOADING GUIDANCE

Parking

NIGHTLINER PARKING

is at Sihlquai 12 5, 8005 Zurich
The parking site is located fairly close to the venue, approx. 7 min on foot.

Nightliner Power:

1x CEE32 or 2x CEE16 (in case of 2 vehicles).

IMPORTANT

The parking area must be reserved at the police station at least 2 weeks before the show. We will organize this for you,



(2) DIRECTIONS
NIGHTLINER

VANS, CARS

Parking is directly at the Venue.
Here is a plan of the parking deck at the event location, ceiling height: 2,50m.



(3) PARKING AREA OVERVIEW

Floor /

Stage

FLOOR

CAPACITY

| | |
|-----------------|-----------------------|
| Standing | 200 |
| Sitting | with FOH 36 |
| | without FOH 42 |



(4) SEATING
PLAN



(5) FLOORPLAN WERK 21

**Bookable for Concerts
or Parties, only public
occasions**

Floor Size:

250 sqm



(6) TECH RIDER



PICTURE
POWER SUPPLY

STAGE

Stage Size:

6 m x 4 m x 0,4 m (W x D x H)
Fix Stage

Maximum load:

per sqm 500kg

Extension:

1m x 4m front center

Clearance:

2.15 m

Max. Truss Load:

400 Kg (LightTruss)

Backdrop Truss:

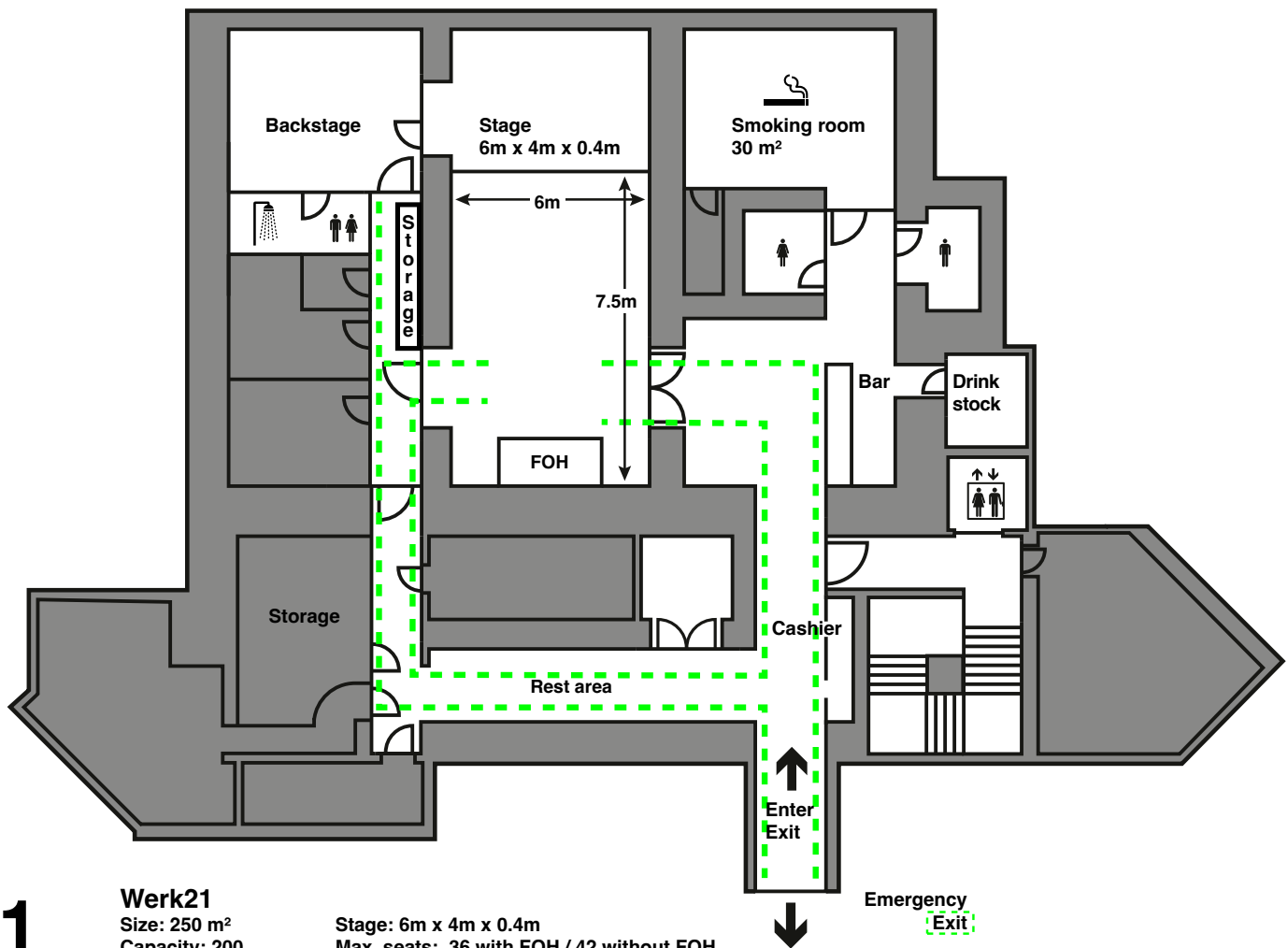
There is no backdrop / backlight truss
in Werk 21.

However, there are options to hang
something lightweight.

Power Supply:

Typ 13 (CH), Schuko (EU) / CEE16 (Light) &
CEE16 (Sound) Used by the house system

WERK 21 PLAN:



IMPORTANT

Emergency exits must remain clear at all times.

STORAGE SPACE

Storage space is available in the hallway in front of the backstage area, as well as in a separate storage room. Please keep the area between the right wall (as you exit from backstage) and the storage area clear at all times.

Audio

SOUND LEVEL

Please note that due to strict Swiss standards, the volume is not allowed to exceed a maximum sound level of 100 dB(A) Leq on average over 60 minutes, and 125 dB(A) Leq at any time.



(7) SOUND AND LASER ORDINANCE
REPORTING FORM

AUDIO SYSTEM / FOH

FOH mixing Desk:

Midas M32 Digital Desk. 32 In / 16 Out

Stagebox:

2x Midas DL16

PA

Front:

2x L-ACOUSTICS A10i WIDE
2x L-ACOUSTICS A10i FOCUS

Subs:

4x L-ACOUSTICS KS21i

Delayline:

2x L-ACOUSTICS

Rearfills:

2x L-ACOUSTICS A10i WIDE

Amps:

3x L-ACOUSTICS LA4X CE

Monitoring:

4 ways from FOH

Wedges:

3x K&F CA1215

Drumfill:

K&F CA1215
K&F SW 115E
(2 ways passiv drumfill)

Microphones:

2x AKG D112

2x Shure Beta 91A

2x Shure Beta 52a

6x Shure SM 58

6x Shure SM 57

4x Sennheiser e604

2x Sennheiser e609

1x Sennheiser e840

1x AudioTechnica ATM230

2x AudioTechnica ATM450

Permitted frequencies for wireless microphone
and IEM systems in Switzerland:



**FREQUENCY
REGULATIONS**

DIs:

8 aktive DI-boxes

Cables & Adapters:

Nearly everything

DJ Equipment:

1x Pioneer DJM-A9 DJ Mixer

2x Pioneer CDJ-3000 CD Player

2x Technics SL-1210 MK2 Turntables

Backline:

Information on request.

Light

Desk:

Lightshark LX LS 1

Dimmer:

MALighting 12 x 20 A Channels DMX

Spots:

12x Prolights EclPar IPMFC 100W RGB+WW

4x Prolights DisplayCobFC (rgb PARs)

4x PC-Lamp 300W

4x Briteq LED COB Blinder 200W

Party:

10x Prolights PIXIEBEAM Beam

8x Prolights LUMPIPIX8H LED batten

4x Prolights JETSPOT2 Moving head

1x Mirrorball

1x Eurolite Strobo 1kW

Haze:

1 x Hazer Unique

The Hazer can be used only to a certain amount, which is approx.

20% of the maximum output.

NOTE:

External Haze, Fog, Smoke machines etc. are not allowed in the venue!

Licht Plot, DMX Patch:



(8) LIGHT PLOT



(9) PATCH LIST

Video

2 x Epson Beamer EB - L265 F/ Full HD / 4600 lumen & 1x Screen 203cm x 114cm

Backstage

One dressing room to share for main and support act with sofas and chairs, one shower, several power outlets, Wi-Fi, fridge, mirror. There is a direct access to the stage.

We do not offer catering, please ask your promoter regarding a crew-catering. Separate rooms with cooking facilities can be booked.

SMOKING POLICY

The entire public area of the venue is a nonsmoking area. There is a nice smoking room in the venue, open to the public upon doors.

PRODUCTION OFFICE

There is no separate production office.

Informations

WI-FI

A separate Wi-Fi connection is available for event organizers and artists; the password is posted backstage.

Only Wi-fi available, no hardline ethernet port.

MERCHANDISE

Artists are free to sell merchandise. A small sales area (one table, chairs, lighting, and electricity) will be provided. There is no concession fee.

GUEST CLOAKROOM

Infrastructure with coat hangers and racks is available. Responsibility, staffing, and liability lie with the tenant or event organizer.

SECURITY

Security is the responsibility of the event organizer. Public events without or with insufficient security personnel constitute gross negligence. The event organizer is fully liable. The decision as to whether security is guaranteed rests with Dynamo. The security personnel are responsible for the entire building and the outdoor area.

BAR

Two double pumps, central ice machine in the parking deck, cold storage equipped with fixed beverage rack

Pictures

STAGE + SETUP

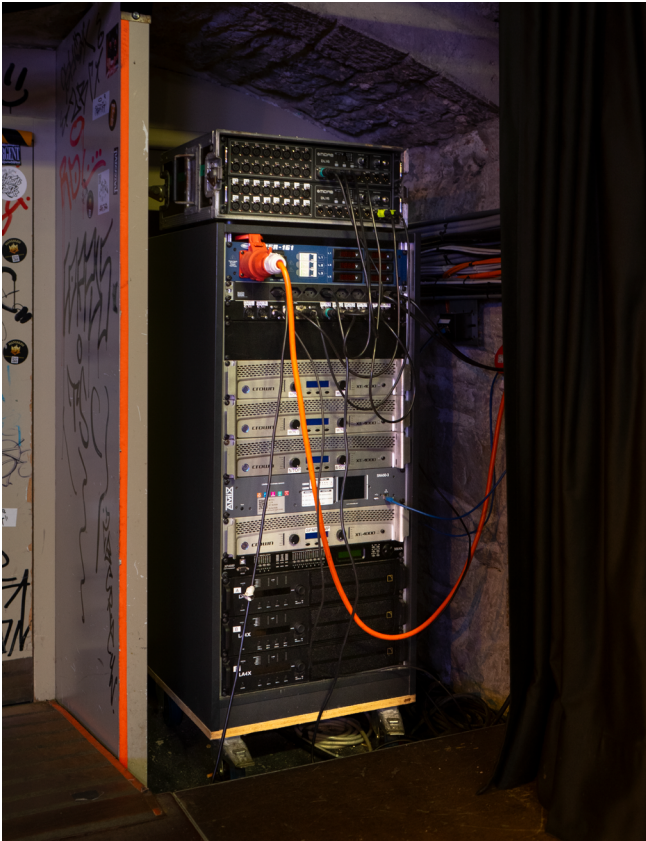


Show setup with light and haze



Audience perspective with chairs

POWER SUPPLY



BACKSTAGE

