

DYNAMO
JUGENDKULTURHAUS

**VENUE
INFORMATION**

SAAL

Jugendkulturhaus Dynamo
Wasserwerkstrasse 21
CH-8006 Zürich
info@dynamo.ch
+41 44 415 76 60
www.dynamo.ch



Eine Institution
der Stadt Zürich

WELCOME TO DYNAMO!

What is Dynamo?

The Dynamo Youth Culture Center is a non-profit institution located directly on the Limmat River, it's part of the Social Services of the City of Zurich. Our users and visitors, along with their cultural interests, are at the center and shape everything we offer. We provide youth and young adults with spaces where they can develop their own initiative, assume responsibility, and unleash their creativity. They implement their activities, projects, and events according to their own ideas and needs and receive professional and practical support as needed.

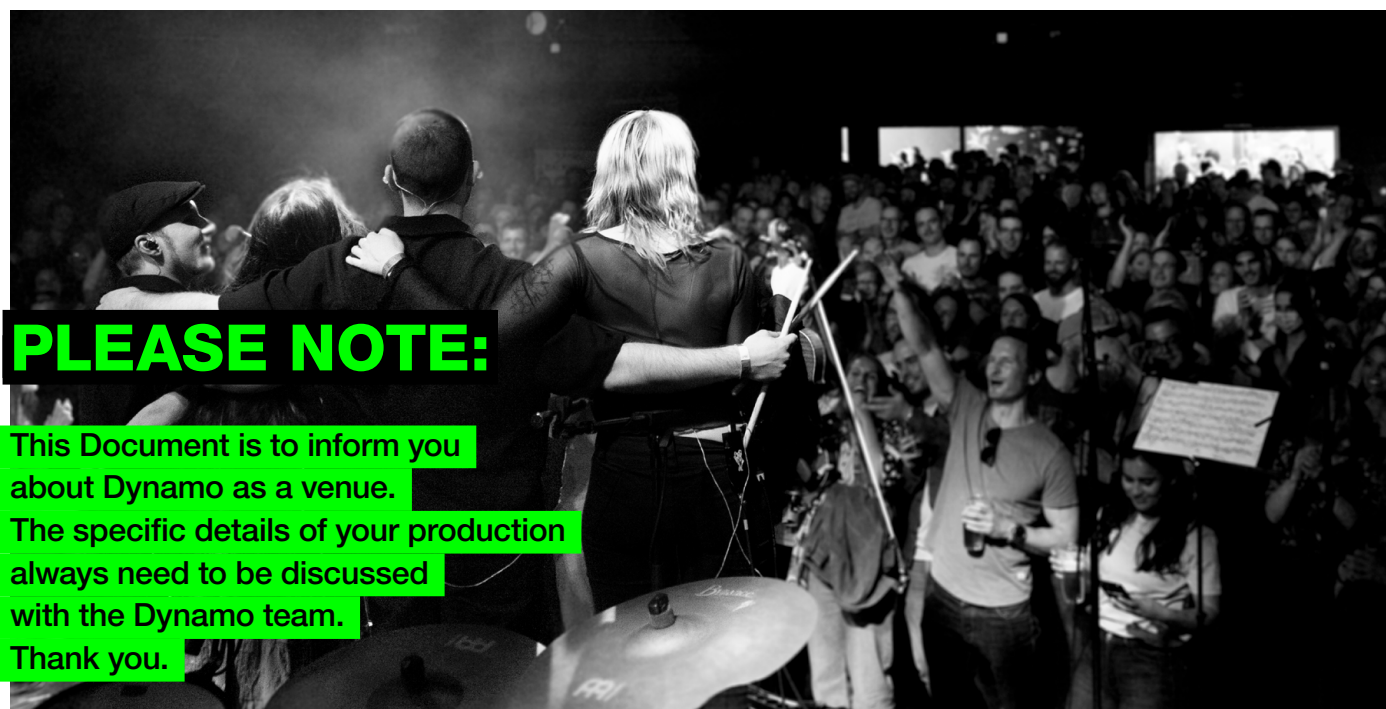
At the same time, we are also a meeting place for the entire population, building bridges between generations.

In this way, we make youth culture accessible to a broader section of the population and foster mutual understanding and acceptance.

CAPACITY

Standing	650
Sitting	with FOH 190
	without FOH 220

**Bookable for Concerts
or Parties, only public
occasions**



PLEASE NOTE:

This Document is to inform you about Dynamo as a venue. The specific details of your production always need to be discussed with the Dynamo team. Thank you.

Index

-	Directions	4
-	Load in / load out	5
-	Parking	6
-	Floor / Stage	7
-	Audio	9
-	Light	11
-	Video / Data Projection	11
-	Backstage / Artist Care	12
-	Further informations	13
-	Pictures	14

DIRECTIONS

To get to the backstage entrance and the loading zone, please use this address:

Wasserwerkstrasse 21
8006 Zürich
Switzerland



MAPS

PLEASE CONSIDER

there is a concrete step barrier between the lanes at the Wasserwerkstrasse, thus you can't turn around on the spot.

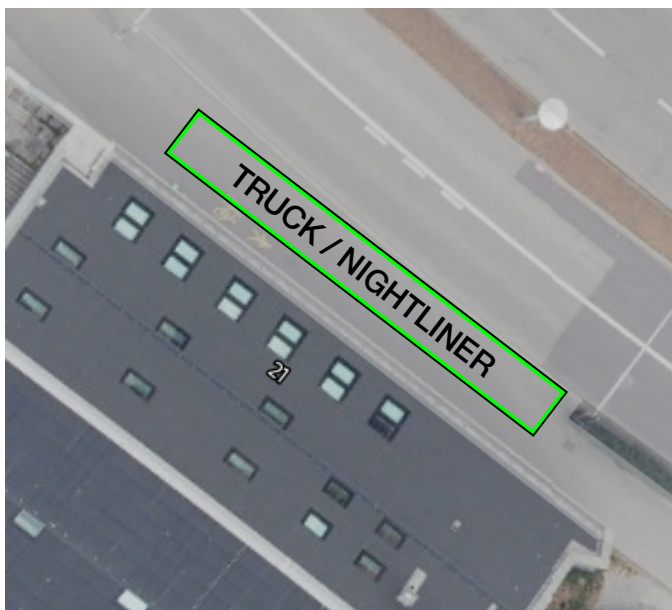


LOAD IN / LOAD OUT

Loading is only possible at the agreed time according to the schedule, while the exact unloading time will be determined on the day of the event.

BUS/TRUCK STOP AND LOADING

The vehicle (bus/truck) must drive fully onto the sidewalk at Wasserwerkstrasse 21. Traffic on the left must not be obstructed. Please leave enough space on the right for pedestrians and cyclists. Only one bus or truck is allowed at a time.



PLEASE KEEP IN MIND,

that the loading zone is NOT a parking spot and the load should be completed as quickly as possible.

From loading zone its a 30m flat push to the elevator, then a 30m flat push to the stage.

Door Dimensions:
2,29m x 1,69m (H x W)

Elevator Dimensions:
2.2m x 1.3m x 1.7m
(H x W x D)
max. weight: 1600kg



(1) LOADING GUIDANCE

Parking

NIGHTLINER PARKING

is at Sihlquai 12 5, 8005 Zurich
The parking site is located fairly close to the venue, approx. 7 min on foot.

Nightliner Power:

1x CEE32 or 2x CEE16 (in case of 2 vehicles).

IMPORTANT

The parking area must be reserved at the police station at least 2 weeks before the show. We will organize this for you,



(2) DIRECTIONS
NIGHTLINER

VANS, CARS

Parking is directly at the Venue.
Here is a plan of the parking deck at the event location, ceiling height: 2,50m.



(3) PARKING AREA OVERVIEW

FLOOR / STAGE

FLOOR

CAPACITY

Standing	650
Sitting	with FOH 190
	without FOH 220



(4) SEATING
PLAN



(5) FLOORPLAN
SAAL

**Bookable for Concerts
or Parties, only public
occasions**

Room Size:
400 sqm

STAGE

Stage Size:

max. 7m x 5m x 0.8m (W x D x H)
fix stage

Maximum load:

per sqm 500kg

Clearance Stage Lighting:

3.3m

Power Supply:

CEE 16 / CEE 32 / CEE 63



PICTURE
POWER SUPPLY



(6) TECH RIDER

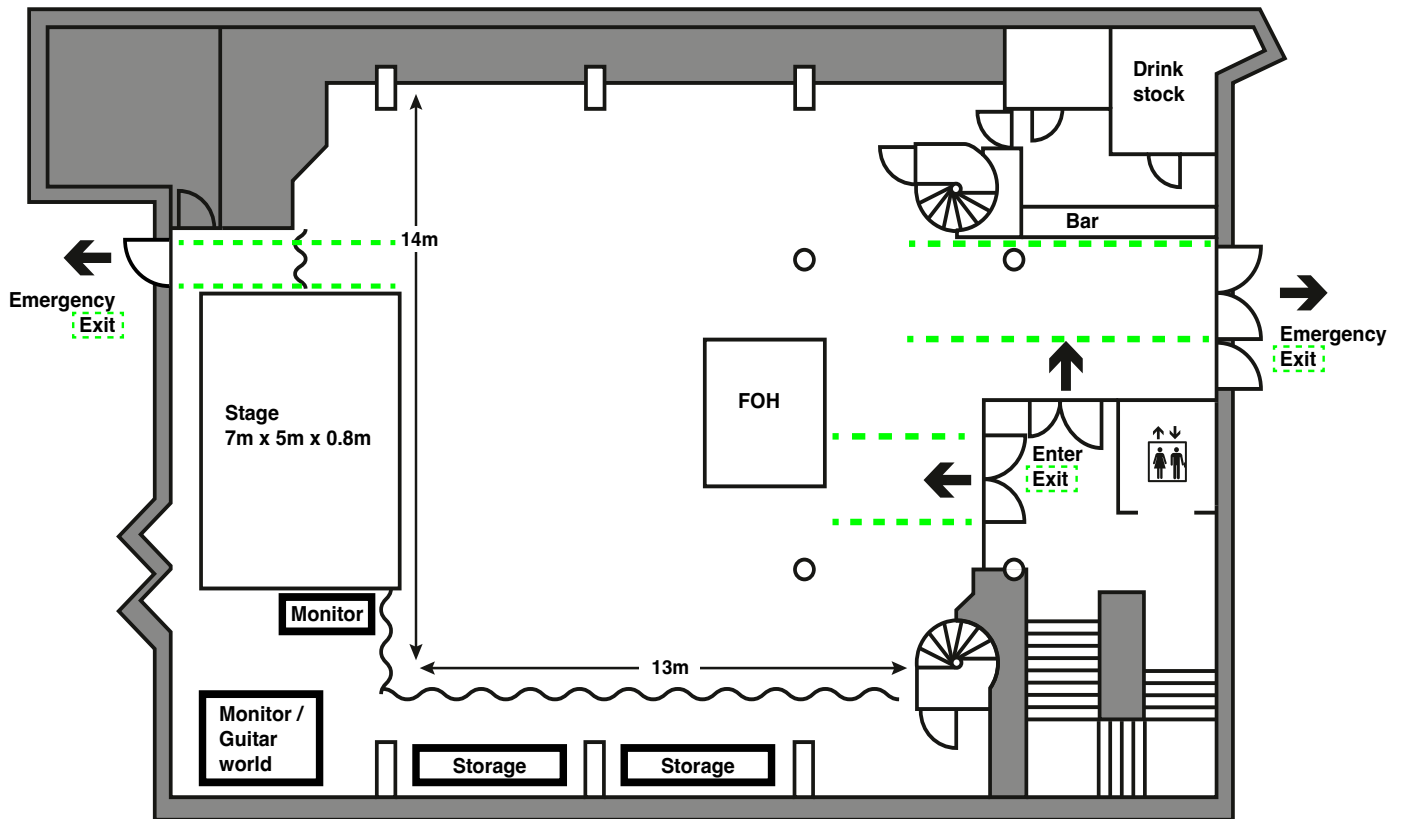
Max. Truss Load:

400 Kg (LightTruss), 250 Kg (Backdrop)

Backdrop Truss Length:

5m

SAAL PLAN:



3

Saal

Size: 400 m²

Capacity: 650

Max. seats: 190 with FOH / 220 without FOH

Stage: 7m x 5m x 0.8m

IMPORTANT

Emergency exits must remain clear at all times.

STORAGE SPACE

There is limited space on the side behind the curtain. Please keep the walkway between the curtain and the storage area clear.

Audio

SOUND LEVEL

Please note that according to a strict Swiss law respective the loudness, the volume is not allowed to exceed the **maximum level 100 dB(A) Leq at 60 minutes** and 125 dB(A) at any time.



(7) SOUND AND LASER ORDINANCE
REPORTING FORM

AUDIO SYSTEM / FOH

FOH Desk:

Yamaha CL5

PA

Front:

6x L-ACOUSTICS ARCS II

Subs:

8x L-ACOUSTICS SB18i

Rearfills:

2x L-ACOUSTICS ARCS WIDE

ON STAGE

Monitoring Desk:

Yamaha QL5

Stagebox:

Yamaha RIO3224, 32 In/ 24 Out

Wedges:

10x K&F CA1215

Drumfill:

K&F CA1215

K&F SW 115E (2 way passiv drumfill)

Sidefill:

2x K&F CA1515

Microphones:

2x Shure Beta 91A

2x Shure Beta 52a

6x Shure SM 58

6x Shure SM 57

6x Sennheiser e604

2x Sennheiser e906

4x AudioTechnica ATM450

4x Sennheiser ew100 G3 e935 capsule
(wireless)

Permitted frequencies for wireless microphone
and IEM systems in Switzerland:



**FREQUENCY
REGULATIONS**

DIs:

10 active DI-boxes

Cables & Adapters:

Nearly everything

DJ Equipment:

1x Pioneer DJM-900 NXS 2 DJ Mixer

2x Pioneer CDJ-2000 NXS 2 CD Player

3x Technics SL-1210 MK2 Turntables

Backline:

There is no backline, please bring your own.

Light

1 x Desk:

GrandMA2 on PC Command - & Fader-Wing

1 x Desk:

LightShark LS1

Dimmer:

3 MA Lighting 12 Channel 2.3 KW

Spots:

22 x ETC colour source par Deep Blue

9 x ETC colour source spot Deep Blue /
Fresnel

3 x ETC colour source spot Deep Blue /
Fresnel (Backup)

4 x ETC colour source spot Deep Blue /
Profler

2 x Atomic 3000 Strobo 2000W

6 x Briteq LED COB Blinder 2x100W

1 x Mirrorball 1m diameter

Moving:

2 x Prolights Astra Hybrid330 Moving

2 x Briteq BTX 180 LS LED MovingHead

6 x Rush MH 1 spot moving

12 x Rush MH 2 wash

4 x Prolights Jet Spot 4Z

Haze:

1 x Hazer Unique

The Hazer can be used only to a certain amount, which is approx. 45% of the maximum output.

NOTE

External Haze, Fog, Smoke machines etc. are not allowed in the venue!

Light Plot, DMX Patch:



(8) LIGHT PLOT



(9) PATCH LIST

Video

Fix: 1 x Christie DS- Series Projector LWU

900-DS & 1x Screen 5m x 2.8m (motorized)

Portable: 2 x Epson Beamer EB - L265 F/ Full

HD/4600 lumen & 1x Screen 406cm x 305cm

Backstage

One dressing room to share for main and support act with sofas and chairs, one shower, several power outlets, Wi-Fi, fridge, mirror. There is a washing machine and tumbler on site. No direct access to stage, separate stairway through the production office to enter the stage.

We do not offer catering, please ask your promoter regarding a crew-catering. Separate rooms with cooking facilities can be booked.

SMOKING POLICY

The entire public area of the venue is a nonsmoking area. There is a nice smoking room in the venue, open to the public upon doors.

PRODUCTION OFFICE

There is a production office upstairs with a view to the stage.



(10) FLOORPLAN
PRODUCTION OFFICE



(11) FLOORPLAN
BACKSTAGE

Informations

WI-FI

A separate Wi-Fi connection is available for event organizers and artists; the password is posted backstage.

Only Wi-fi available, no hardline ethernet port.

MERCHANDISE

Artists are free to sell merchandise. A small sales area (one table, chairs, lighting, and electricity) will be provided. There is no concession fee.

GUEST CLOAKROOM

Infrastructure with coat hangers and racks is available. Responsibility, staffing, and liability lie with the tenant or event organizer.

SECURITY

Security is the responsibility of the event organizer. Public events without or with insufficient security personnel constitute gross negligence. The event organizer is fully liable. The decision as to whether security is guaranteed rests with Dynamo.

The security personnel are responsible for the entire building and the outdoor area.

BAR

Three double pumps, central ice machine in the parking deck, cold storage equipped with fixed beverage rack

Pictures

STAGE + SETUP



Show setup with light and haze

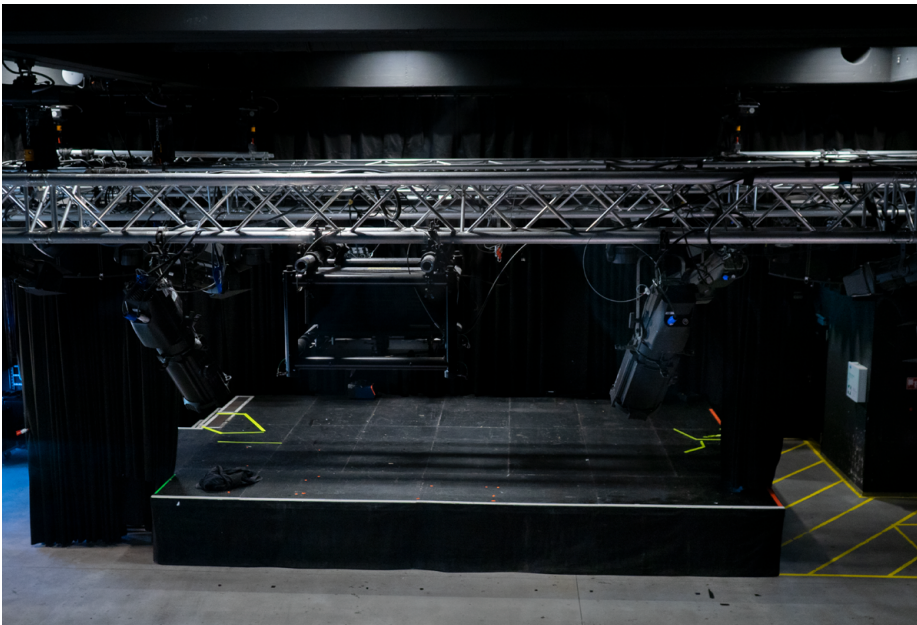


Stage perspective with audience seating

EMERGENCY EXIT



Emergency way on the left side of the stage



View from the smoking room above

POWER SUPPLY



SMOKING ROOM



Inside the smoking room



View from the hall up to the smoking room

PRODUCTION OFFICE 4TH FLOOR



Workdesks



Way to the stage

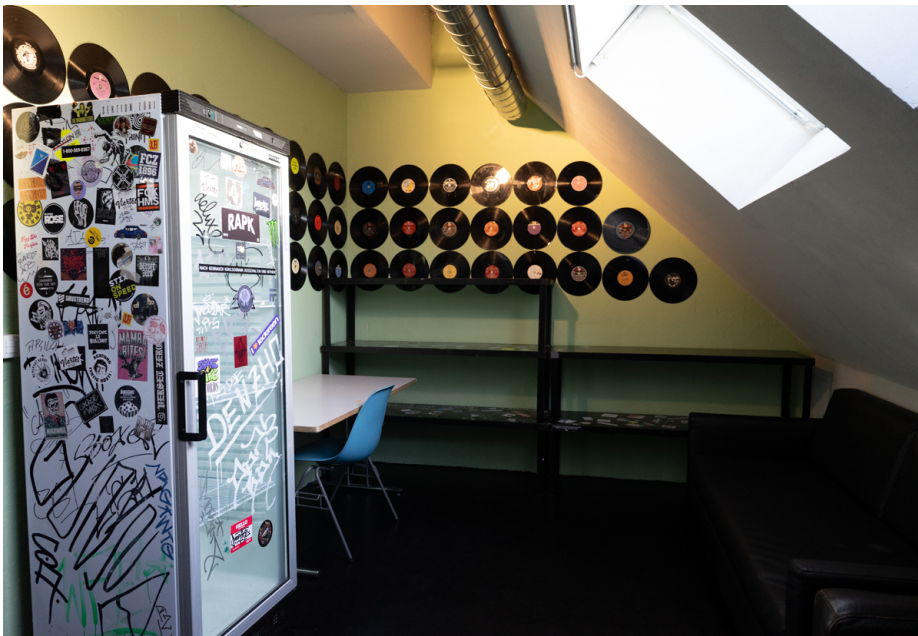


Safe



Fridge

BACKSTAGE 5TH FLOOR



BACKSTAGE 6TH FLOOR

